



2016 WMAS Reef Tour

1

Welcome to the 2016 WMAS Reef Tour !



This packet is your guide to seeing some of the most beautiful and exotic creatures that inhabit our world's marine ecosystems. Prepare yourself for a fun day of driving around the valley - visiting homes with colorful corals, marine fishes, shrimp, plants, crustaceans, and friendly people.

All you have to do is drive around to the houses listed in this packet. These houses have been listed in a geographical order to help you find the locations near you. Feel free to ask the aquarium owners any questions you may have, they love talking about their hobby.

Who are we? You may or not be familiar with the Wasatch Marine Aquarium Society (WMAS).

We are an organization that has been here in the Salt Lake area for 20 years! In that time, we have grown to be one of the largest Aquarium Clubs in the nation. We have free monthly meetings with guest speakers, aquarium advice, fundraisers, socials, coral frag sales, and 10% off purchases at many local fish stores. We have a wonderful website with much information and an online discussion forum. In fact our website was recently presented with an award by the Marine Aquarium Societies of North America as the number one hobbyist website in the nation!

Please take advantage of this opportunity to learn more about the Wasatch Marine Aquarium Society, and about the saltwater aquarium hobby.

Thanks, and have a great time!

Arthur Klinkenberg
President, Wasatch Marine Aquarium Society

P.S. - Be sure to visit our website at www.utahreefs.com



2016 WMAS Reef Tour

Davis County

2

Jeff & Marianne Stephenson
(Krazie4Acans)

2575 S. 1000 W. Syracuse, UT 84075

90 G Show Tank loaded with coral and fish



(801) 810-5430

Take the Antelope Island exit off I-15 Head west toward the island. Turn left on 1000 West (Smiths, Walgreens and 7-11 on the corners). Drive about a mile on 1000 West. House is on the left - 2 houses before you get to the round about.



2016 WMAS Reef Tour

Davis County

3

Geoff Sorensen
(1stupidpunk)

329 W. 700 N
Clearfield, UT 84015

Mixed Reef Tank – Dart Frog Tank



(801) 332-0662

- Take I-15 exit #335 (650 N Clearfield) heading west. (if you accidentally go east you'll end up on Hill AFB)
- Follow 650 N until it comes to a "T" (3 blocks from freeway) turn north(right) onto Ann St.
- Follow Ann St. 1/2 block north. My house is on the corner of Ann St. and 700...



2016 WMAS Reef Tour

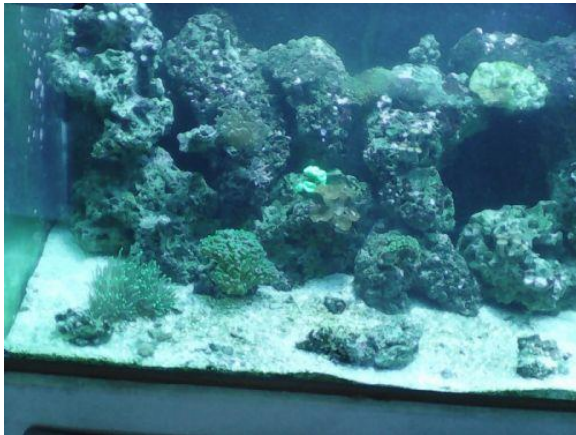
Salt Lake County

4

Fred Nessen
(untaimed6)

1418 W. 3300 S.
West Valley City, UT 84119

**125 gal non drilled mixed reef brs dual reactor gfo carbon 3 little fishes
reactor bio pellets, bubble magus curve 7 skimmer.**



(385) 282-3614

**Head north on redwood road from 3500s make a right at the
blue auto glass shop I'll be on the left side of the road before
the bend**



2016 WMAS Reef Tour

Salt Lake County

5

Jeffrey G Smith
(jeffreyg)
4128 So Fortuna Way
Holladay, UT 84124

210 Gallon SPS Heavy Reef Tank!



(801) 879-7286 - Cell

(801) 993-0067 - Home

Approximately 39th South and 38th east above Dans on Wasatch. Exit at 39th South on 215. Head east.

Past Wasatch Blvd. 39th is now Jupiter Drive.

Count about 4 streets. Turn right onto Fortuna Way.

The house is the first house on the west side as you turn on to Fortuna Way.



2016 WMAS Reef Tour

Salt Lake County

6

Brad Syphus
(tileman)
5545 Walden Meadows Drive
Murray UT 84107

**335 Gallon Ultimate Reef Tank! Neptune Systems
"Marine Aquarium Hobbyist Of The Year", 2015**



(801) 671-7177

**On I-15 Exit 300. Head west to the light at 1070 West.
Turn south on 1070 west and then east on Walden Meadows
drive.
Continue on Walden Meadows until it curves south.
I'm on the east side of the road, 5545 Walden Meadows**



2016 WMAS Reef Tour

Salt Lake County

7

*Steve Lopez
(Lope Dawg)*
5729 W Emmeline Dr
Herriman, UT 84096

72 gallon. Deep sand bed. No skimmer, no refugium, cannister filter with carbon and phosphate remover. Lighting: kessil leds. Inhabitants: soft corals, lps, anemones.



(801) 550-5157

- **Directions:** Directions: From Bangerter and 13400 s. Go west to Rosecrest then south to Mirabella then turn right. Go to Roselene then turn left. Roselene ends on Emmeline. House is Across the street and to the right. (5729 w. Emmeline dr.)



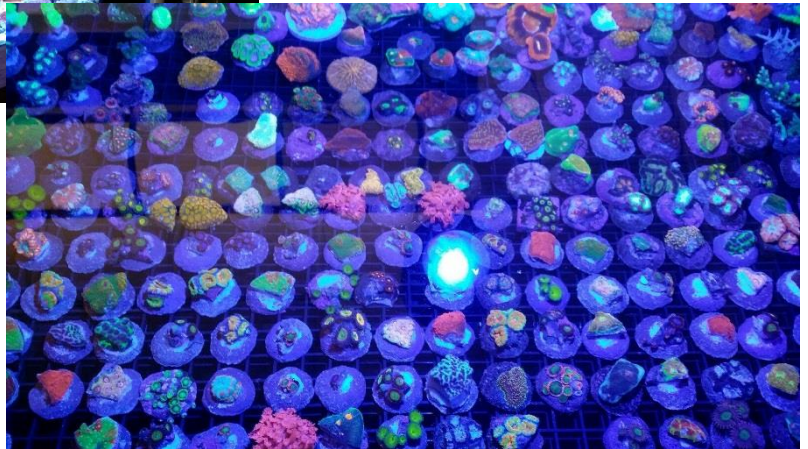
2016 WMAS Reef Tour

Salt Lake County

8

Nick Tenney
(*Nick801*)
8867 S 580 E
Sandy, UT 84070

300 G Deep Dimension Tank and Frag tank system (thousands of Coral)



(801) 680-4676

Nick will have his turtles on display as well!



2016 WMAS Reef Tour

Utah County

9

*Shaun and Angela Sabey
(Sabeypets)
1224 W 1200 N
Orem, UT 84057*

Many reef tanks and more – baby clowns, cuttlefish, chameleons



(385) 299-6003

Location is in A Reef Oasis Storefront.

Store will be open early for Reef Tour!



2016 WMAS Reef Tour

Utah County

10

Chris & Tricia Holcomb
(CHAOS)
991 S 2300 E
Springville, UT 84663

45 G Corner Reef Tank, 180 G Display Tank and a 90 G Frag Tank



(801) 709-9070

East on 4th south, right at the round about onto canyon rd. 1 mile ahead on the left corner at 2300e



2016 WMAS Reef Tour

Utah County

11

Paul Locke
(BuilderofDreams)
515 S 1500 E
Spanish Fork, UT 84660

150 G and 210 G Reef Tanks



(801) 850-4915